

February 2019



# Instrumentation Hire Guide

## FAQs & Pricing



Hire instruments from leading manufacturers:



UNDERSTANDING, ACCELERATED



# Contents

Welcome	page 2	Heat Stress Monitoring	page 5
Gas Detection	page 3	Noise and Sound Monitoring	page 5
Fit Testing	page 4	Vibration Monitoring	page 5
Air Quality and Dust Monitoring	page 4	FAQs	page 6

## Welcome

### Hires at a glance:

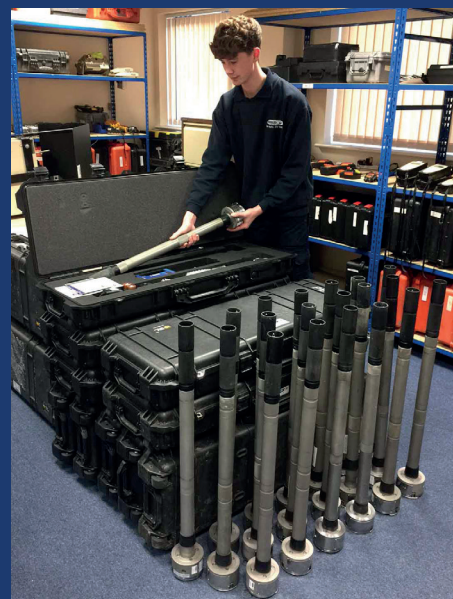
- Our friendly team can advise you on what instrument you need for any specific task
- Hire costs vary depending on the complexity and value of the instrument
- Hires come with a protective case, electrical power cables and the necessary software for data collecting where applicable
- Minimum three day hire period, no maximum
- Next day DHL delivery for orders processed by noon (for instruments in stock)
- In a hurry? You can arrange to pick up your instrument from our hire centre in Oxfordshire, providing we have it in stock
- Discounts for longer-term hires or multiple instrument hires
- Simple to arrange hire extensions
- Courtesy reminders when your hire agreement is coming to an end
- Free technical support for the duration of your hire
- Data download service available on request
- Free quotations.

### What comes with my hire instrument?

All instruments are provided in a durable protective case suitable for transportation and use on site. They also come with docks, batteries and charging capability (where applicable), power leads, software and manufacturer manuals and data logging if requested.

### FAQs

For further helpful information, please refer to our FAQ section on page 6 of this guide.



All hire prices listed exclude VAT.

[hire@shawcity.co.uk](mailto:hire@shawcity.co.uk) Tel: 01367 899554 [www.shawcity.co.uk](http://www.shawcity.co.uk)

Shawcity Ltd, 91-92 Shrivenham Hundred Business Park, Watchfield, Oxfordshire SN6 8TY



## Area Gas Detection



AreaRAE

From £120.00  
per week

## Survey PIDs - Latest Models



Tiger

From  
£165.00  
per week



MiniRAE 3000



MiniRAE Lite

From  
£165.00  
per week

## Personal PIDs



From  
£65.00  
per week



Cub available  
as ppm, ppb  
and TAC



ToxiRAE Pro  
PID

From  
£65.00  
per week

## Benzene-specific Monitors



From £165.00  
per week



UltraRAE 2000  
and 3000



From £165.00  
per week



Tiger Select

## Multi Gas Monitors



MultiRAE

From £85.00  
per week

From £195.00  
per week



MultiRAE with  
11.7eV Lamp

From  
£165.00  
per week



MultiRAE  
Benzene  
6 Gas

## Mercury Detection



From £295.00  
per week



Mercury Vapour  
Indicator

## Confined Space Monitors



From  
£45.00  
per week



QRAE 3  
(Diffusive and  
Pumped)



ToxiRAE Pro  
CO<sub>2</sub>



From  
£45.00  
per week



BW Clip4



GasAlert  
Quattro



MicroClip  
XT/XL



From  
£45.00  
per week



Multi Gas Clip  
Simple



Multi Gas Clips  
Pumped or  
Diffused

## Single Gas



ToxiRAE Pro

From  
**£30.00**  
per week

Gas  
configurations:  
CO<sub>2</sub>, CO, O<sub>2</sub>,  
SO<sub>2</sub>, PH<sub>3</sub>,  
NO, NO<sub>2</sub>, H<sub>2</sub>,  
H<sub>2</sub>S, CL<sub>2</sub>, NH<sub>3</sub>



Single Gas  
Clip

From  
**£30.00**  
per week

Gas  
configurations:  
CO, O<sub>2</sub>, H<sub>2</sub>S,

## Ground Gas Monitors



GFM  
430/435/436

From **£200.00**  
per week



GasClam  
From **£250.00**  
per week

## Leak Detectors



GasCheck G3  
From **£50.00**  
per week

## Fit Testing



Quantifit  
Respirator Fit  
Tester  
From **£450.00**  
per week

## Personal Air Quality & Dust



AM520 SidePak  
Personal Dust  
Monitor  
From **£200.00**  
per week



GilAir Plus Personal  
Dust Monitor  
From **£75.00**  
per week

## Environmental Air Quality & Dust Quality



EVM-3 (Dust only, Temp  
and Humidity)  
From **£200.00** per week



EVM-7 (Dust, VOCs, CO,  
CO<sub>2</sub>, Temp and Humidity)  
From **£200.00** per week



EVM Outdoor  
Environmental Kit  
with EVM-7  
From **£350.00**  
per week



Environmental  
DustTrak DRX  
From **£350.00** per week



DustTrak  
(Desktop or Handheld)  
From **£200.00** per week



Environmental  
Enclosure with DustTrak  
Desktop Version  
From **£350.00** per week

## Heat Stress Monitoring



QT 34/36 Data  
Logging Heat Stress  
Instrument  
**From £210.00 per week**



QT44 Data  
Logging Heat Stress  
Instrument  
(Waterless)  
**From £210.00 per week**



QT II Personal  
Heat Stress  
Monitor  
**From £100.00 per week**

## Noise Dosimeters



Edge

**From £50.00  
per week**



SV104

## Sound Level Meters



**From £185.00  
per week  
including  
calibrator**



SoundPro (Type 1  
Microphone, Data  
logging, 1/3 Octave  
Band)



SE401



SE402IS ATEX  
approved  
Zone 1 SLM



SV971



SVAN 977

**From £185.00  
per week  
including  
calibrator**



MOLES  
Outdoor Kit

## Vibration Monitoring



SV106 HAV  
**From £250.00  
per week**

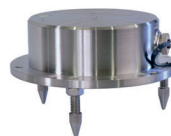


SV103 HAV  
**From £250.00  
per week**



SV207B Ground  
Vibration Monitor +  
SV106  
**From £350.00  
per week**

+



*"Shawcity's technical expertise has provided cogent solutions to a range of gas monitoring challenges and its staff knowledge is of an order expected of university research scientists."*

*Bill Parker, Helios*

*"We have consistently received excellent support and advice on products and services on offer through Shawcity. The team have helped us move with the times, correctly matching reliable products for the jobs we require them for. Shawcity staff are very well motivated and provide an excellent service with simplified procedures."*

*Gavin Craig, Erith Contractors Ltd*



# Instrument Hire FAQs

The following information answers many of the frequently asked questions we receive about our hire service. If the answer you're looking for is not listed below, please contact us on **Tel: 01367 899554** or **email: [hire@shawcity.co.uk](mailto:hire@shawcity.co.uk)** and we'll be more than happy to answer any questions.

## Why would I hire an instrument?

There are several reasons. Sometimes the instrument may only be required for a short period or occasional use, meaning it would not be economical to invest in buying one outright. Sometimes if you have an instrument which needs an annual service, you may need to hire an instrument while yours is with our Service Centre. Also, customers often like to use an instrument on a hire basis so they can try it and possibly others before committing to making a purchase. We deduct the hire cost from the purchase price in these circumstances, offering you even better value.

## I need to hire an instrument but I'm not sure which one would be best?

Our friendly Hire Team and Product Specialist Managers are available to discuss your project with you and advise you on the instrument best suited for the job. Just contact us on Tel: **01367 899554** or email **[hire@shawcity.co.uk](mailto:hire@shawcity.co.uk)** for help or advice.

## How much does it cost to hire an instrument?

The cost varies depending on the complexity and value of the instrument. Prices start from £45.00 + VAT per week. Contact the Hire team for a free quotation.

## What equipment is included in the hire agreement?

All instruments are provided in a durable protective case suitable for transportation and use on site. All instruments also come with docks, batteries and charging capability (where applicable), power leads, software, manufacturer manuals and data logging if requested. If you have any questions or particular requirements, please discuss these at the time you arrange your hire.

## How long can I hire the instrument for?

The minimum hire period we offer is three days, but there is no maximum. So you can keep the instrument on hire for as long as you need it! If you already have the instrument on hire, you can contact us to easily arrange an extension to your hire agreement.

## How do you get the hire instrument to me?

Instruments are sent to you via our courier on a next-day delivery if processed before noon, depending on your location. If you are really short of time, you also have the option to pick up your hire instrument directly from us in Oxfordshire the same day; providing you contact us in advance to ensure we have it in stock and to give our team enough time to check and prepare it for you.

## Returning the instrument

Once you have finished with the instrument you can arrange for your own courier to return it, or we can arrange a courier return to us for a charge.

## Is there any discount for longer-term hire?

Yes, the discount structure for longer-term hire is shown below. Please note we also offer discounts for multiple instrument hire. If you are hiring multiple instruments over multiple weeks, only one discount structure will apply.

Number of Weeks' Hire	% Discount Applied
Up to 2 weeks	0%
2 weeks up to 4 weeks	5%
4 weeks up to 10 weeks	10%
10+ weeks	20%

# Instrument Hire FAQs

## Is there any discount for hiring multiple instruments?

Yes, the discount structure for multiple hires is shown below. Please note we also offer discounts for long-term instrument hire. If you are hiring multiple instruments over multiple weeks, only one discount structure will apply.

Number of Instruments Hired	% Discount Applied
1-2	0%
3-4	5%
5-10	10%
10+	20%

## How do I place an order?

Email [hire@shawcity.co.uk](mailto:hire@shawcity.co.uk) with the following information: Delivery date, delivery address, contact name and telephone number, required hire duration and payment details/purchase order. Orders received by noon can be dispatched the same day. Some hires require 24 hours' notice, please contact us for more information. If certain instruments are not available for hire, we will always try to find suitable alternatives.

## How can I work while my instrument is in for calibration/service?

We offer a wide range of instruments which we can arrange to hire to you while your instrument is with us. We will arrange for you to have the hire instrument before you send yours in and you can return the hire after you have received your instrument back from us, meaning no down time for you.

## Can I hire an instrument while I wait for delivery of one I have purchased from you?

Yes, subject to availability we will arrange a hire instrument for you at 50% of the weekly hire rate. You can then send the hire instrument back once you've received your new purchased instrument, so you are never without the equipment you need. In these circumstances, we will also refund you up to two weeks' of hire costs from the purchase price, once we have received your confirmed order to purchase an instrument. Please contact our Hire Team on Tel: **01367 899554** or email [hire@shawcity.co.uk](mailto:hire@shawcity.co.uk) for further information.

## I need the instrument for longer than I thought, do I need to arrange a new hire?

No, simply contact us to request an extension of hire before your original hire period ends. Please provide us with another PO or approval in writing to use the original PO.

## Do I need to arrange insurance to cover the instrument while I have it?

Yes, we would recommend you have insurance in place. This should cover the instrument while with you and in transit to or from us (if using your own courier) as you would be liable for any loss or damage during this time. Most business insurance policies should cover hired goods, but it's best to check the details of your individual policy for your own peace of mind. The value of the instrument is included on the quote and can be referred to for insurance purposes.

## What if the instrument gets damaged or lost while I'm hiring it?

Please notify Shawcity immediately to report any loss or damage to the equipment. If an instrument is damaged during a hire, the Hirer may be liable for all works necessary to repair or, if necessary, replace the instrument. A decision will be made at the discretion of Shawcity.

If an instrument is lost, Shawcity will continue to charge the Hirer the full cost of hire for the equipment until the instrument is found and returned. If the instrument cannot be found, the Hirer shall be liable for the new cost of replacing the equipment hired. Please see the FAQ above which covers instrument insurance.

# Instrument Hire FAQs

## What happens if I forget to send the hire instrument back in time?

The Hire Team will send you a reminder when your hire agreement is coming to an end and will ask i) if you require a hire extension ii) if you are making arrangements to return the instrument or would like us to arrange collection of the instrument, at a charge of £30.00 + VAT. Any instruments received at Shawcity more than two days after the agreed hire period has ended will be charged at the daily hire rate for the overdue period.

## What if I have a problem with the instrument while I have it on hire?

If you have any concerns about using the instrument, you can contact us immediately to ask for advice or help. For example, we can help you over the phone to check the unit is functioning correctly. If we establish there is a problem with the instrument, we will despatch a replacement ASAP, free of charge and arrange for the faulty instrument to be returned to us at no cost to you.

## Can you advise me how to use the instrument once I've hired it?

All hire instruments come with full manufacturer's instructions. If you need further help you can contact our Hire Team on Tel: **01367 899554** or email: **hire@shawcity.co.uk** and they will be able to advise you on any specific issues or concerns you have.

## How do I download the data I've recorded on the instrument?

At the outset of hire, the Hirer must request data logging intervals if required. Software to download data is always provided with each hire instrument. However, if the Hirer is unable to download the data, Shawcity can download it when the instrument is returned and forward the data to the Hirer. This **MUST** be requested prior to the Hire being returned to ensure the data is saved.

## Do you offer a data interpretation service?

No, we don't. But if you need this type of service you can arrange for a certified occupational hygiene professional to interpret your data for you. It is best to discuss your requirements with them before you hire the instrument, so they can advise you on the best type of equipment and set up needed to capture the specific data you want.

